

History of ART International limited.

- British Car Import Sales
- Restoration Service
- Modification

- Emission Test
- Improve Spec. Japanese legal
- Type Approval

- Research Developments
- Inspections

KEY WORDS

- ART Speed to JEM JAPAN.
- Integrate with ART SPEED Engineering LTD
- Open Showroom at Sugunami Tokyo
- Open Factory at Itabashi Tokyo
- Began Car Import Sales, repair.
- Mint condition only for retail.
- SpriteMK1, Mini, MK1, Vanden Plas Princess.
- Factory move to Asaka Saitama improve.
- Established UK Office IANAKI LTD.
- Lotus Esprit, Excel and the Jaguar started.
- Contact SIMIX Co. for Footwork replica DEPT.
- Over 150 cars import Daimler limousine, and Reproduction cars, GT40 etc.
- Started reproduction Factory UK.
- Jaguar stretch limousine in order our SPEC.
- Development Lotus Elite based MX5 approval.
- Started engine tuning business.
- Released Caterham ZETEC our build.
- Factory moved to Kawagoe and new equipments.
- Started Domestic full restoration.
- Released ART Princess.
- UK Office and factory close.
- Started production in Japan ART seven.
- Released the full restore all ADO16 series.
- Sold all ART Princess.
- Released Princess 30th limited edition.

1988



Caterham Sevens

Footwork

1989 Vanden Plas Princess



Late Princess

1990 Austin Healey
Sprite MK1

Ferrari P4 REP
Westfield seven
Jaguar SS100 REP



Miki MK1 only



Lotus Esprit
Lotus Excel



1991 Caterham Seven



Daimler Limousine



GT40 REP



1992 Lotus Elan
Lotus Europe
Lotus Esprit

Jaguar. R.R.Daimler
Porsche 935 REP
Riley MPH REP



Lister Racing

Lotus Excel

Lister Jaguar V12 7L

1993



Jaguar MK2
XJ-6 XJ-S W6



TV Tokyo

1994

Caterham with
Other Engines

Weber Alpha



ART Racing Team



- Sole Distributor Alpha EMS.
- SEGA DTM Game Machine real size JR Kyoto st.
- Racing support for new Engine management.
- Started Emission control testing.
- Starting sales Weber Alpha Engine Management.
- Build up New Kawagoe Factory 4w Rolling Road.
- Creating ART SEVEN, ART23B Mugen.
- Started Racing our Race cars.
- ART Racing Team.
- Registration ART motor sport club (JAF)
- Stop Sales cars.
- Reform the business most Technical Job Base.

1995



Ginetta etc.

ART7
ART23 Mugen



- British Car Import Sales
- Restoration Service
- Modification

- Emission Test
- Improve Spec. Japanese legal
- Type Approval

- Research Developments
- Inspections

KEY WORDS

- Consulting and test for Auto jumble magazine.
- Organize Meister cup race series.



- Development TAKATA Racing Belts Euro. Cars.
- Release TAKATA belts for Super Seven.
- Release TAKATA belts for Lotus Elise
- Started Type approval work for Lotus GF-111-001
- Moved showroom and office to Kawagoe.
- Build New warehouse for the Lotus work.
- Started support by Yokohama Tyre
- New Weber Alpha released.
- Certified Classic new Subaru charged Engines. Car sensor.

- British motor sports show at Yokohama ex exhibition.



ALPHA

- Started development of RC Engines.
- Started Electric Vehicle developments.
- ChoroQ Motors Type approval DEPT.
- Started lecture Autobacs Technical members and Creating shop motor sports museum.



- Started OBD system development.
- Started development for the new semi Racing Tyre for Lightweight sports cars.
- Started restration work for all histric Advan Racing cars for the next years show.



1996 Import Sales
Under 200 cars

Most British and
Europe sports cars
total 250 cars

SEGA DTM 1/1
Meister Cup
Champion ship
TAKATA BELTS

1997

● Consultant

● PHP

1998 ALPHA Dealers
Auto Jumble
Japan Lotus
Champion ship

LOTUS



GF-111-001 Elise

1999



GF-111-002 Elise

TAKATA BELT
Light Weight only

GF-111-003 Elise

Cox.EV Project

GF-082-001 Esprit V8

2000

GF-111-004 Elise

VW Beetle Cup
VW GTI Cup

TAKARA

COX INC.

ChoroQ motors

GF-111-005 Elise 2

2001

Yokohama
LW Sports Tyre

● COX Kawagoe Dept. office

Yokohama Tyre
ADVAN Racing
Restoration



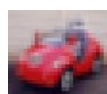
2002 SuperAutobacs
Technical

Electric Micro-car
Q-Car. CQ1-Qi.,U.
I-8014-001.002.003.00

SuperAutoBacs
Decoration

Import Products
Dept.CQM

4.005.



2003

CQ2-Caterham 7
006.

2004

Electric motorcycle tu
I-1728-001,002.
CQ1-006 Qvolt